



Integration av masterdata – hur svårt kan det vara?

Lars Lindberg
Lösningsarkitekt
XLENT Business Integration

Masterdata

2



Definition



Utmaningar



Datamodell



Columbi ägg

Transaktionsdata
Processdata

Masterdata
Referensdata
Basdata
Grunddata

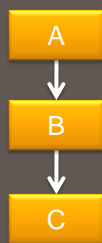
Transaktionsdata

- Skapas pga en händelse
- Ingår i ett flöde
- Förändlas

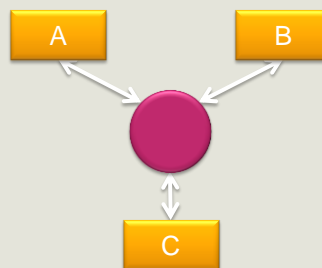
Masterdata

- Referensinformation
- Delas med andra system
- Förändras

Floden



Sjön



Masterdata



Definition



Utmaningar



Datamodell



Columbi ägg

Problem med floden

- Gammalt data som återuppstår
- Information når inte fram
- Information förvanskas på vägen
- "Vem ska vara master?"
- Systemen börjar växa in i varandra

Problem med modellen

- Dubletter
- Data som förstörs
- Sämsta systemet vinner
- Ekonomisk uppföljning är svårt

Masterdata



Definition



Utmaningar



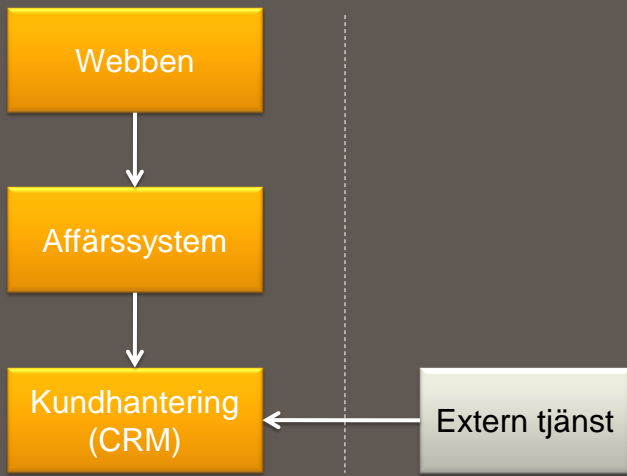
Datamodell



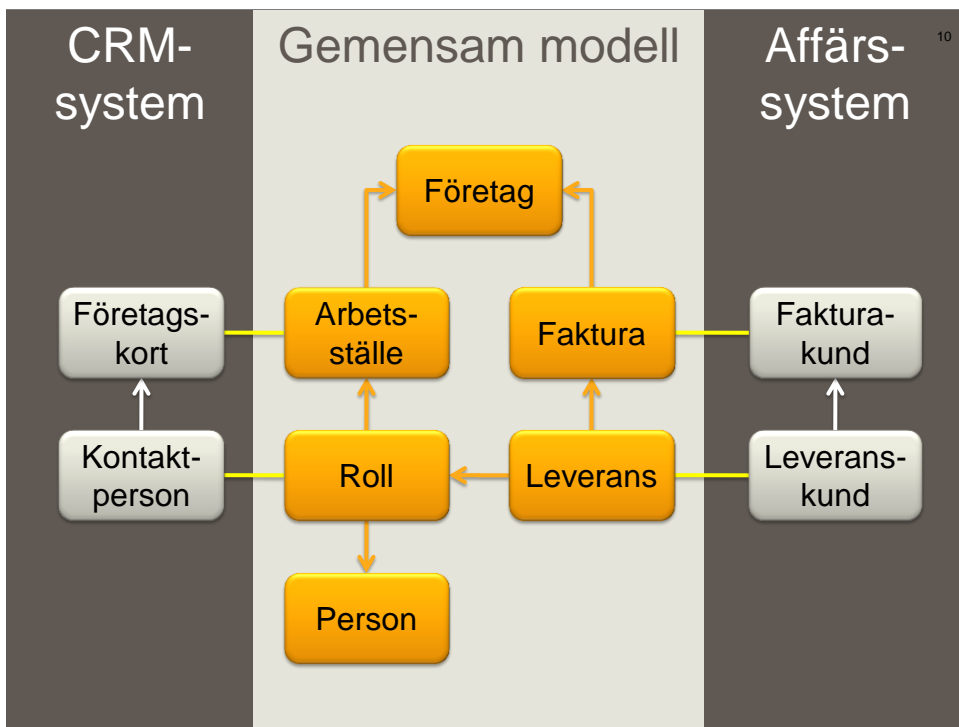
Columbi ägg

Exempel: "Kund"

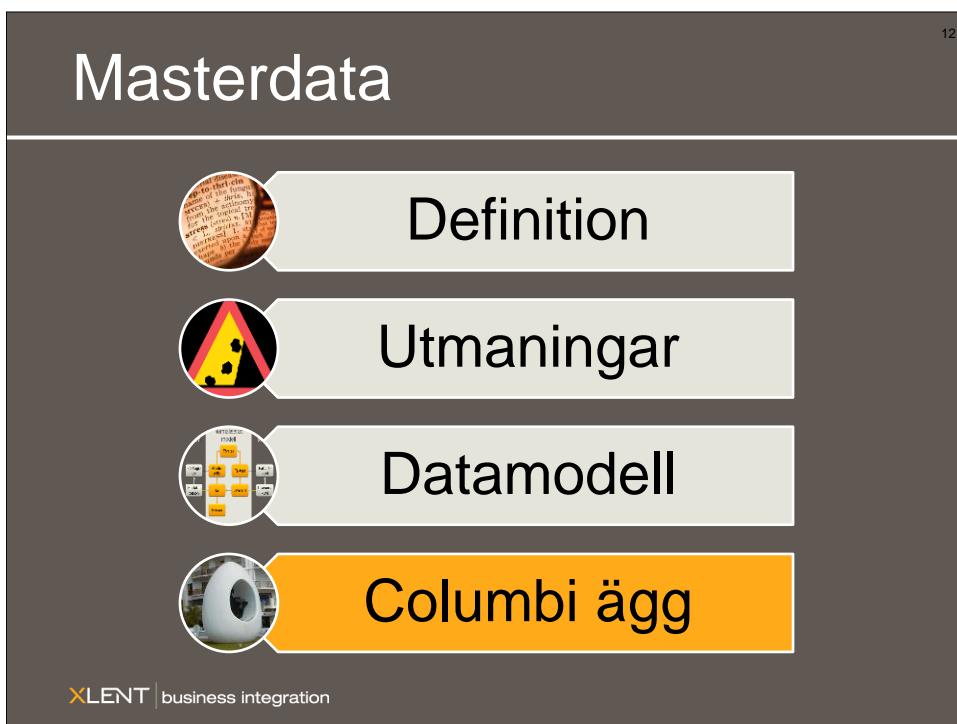
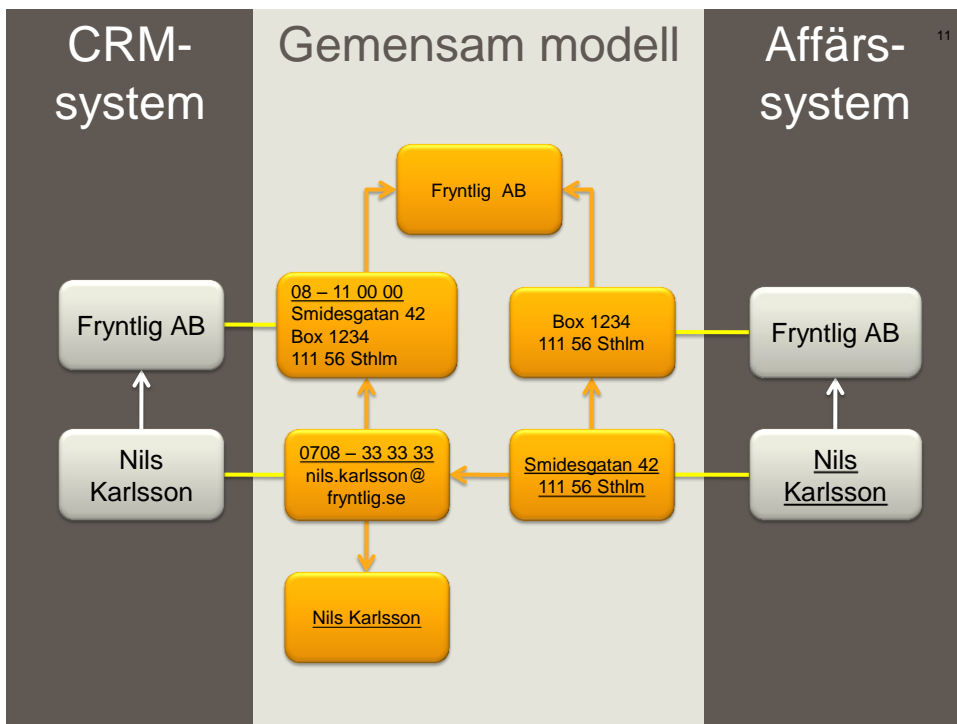
9

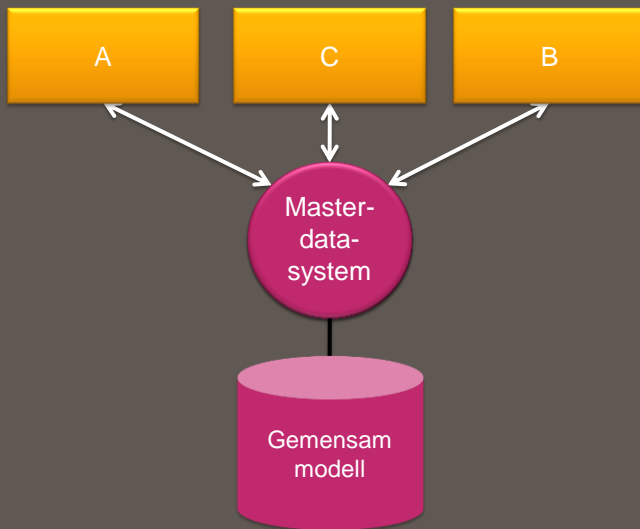
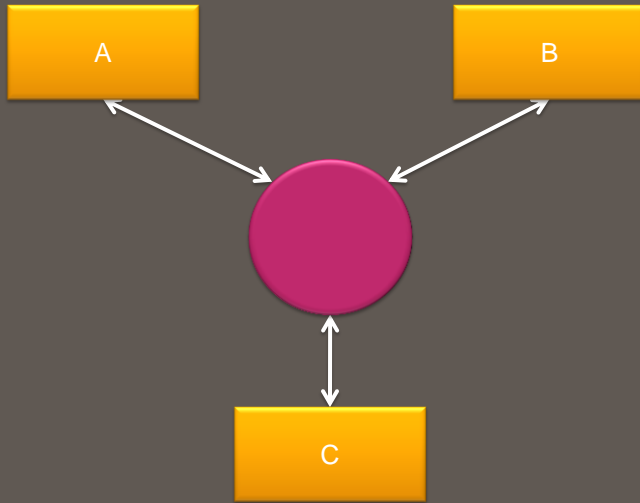


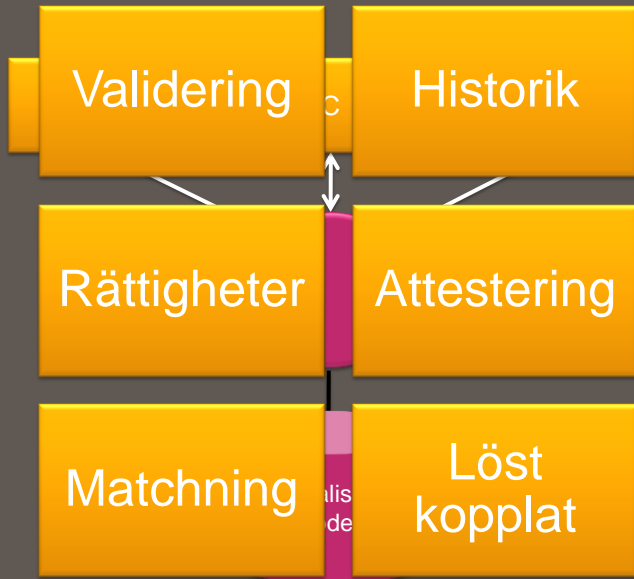
XLENT | business integration



10







XLENT | business integration

lars.lindberg@xlent.se

0708-778001

XLENT Consulting Group
Regeringsgatan 67
111 56 STOCKHOLM
08-519 510 00
www.xlent.se



Copyright © 2010 by XLENT

XLENT
CONSULTING GROUP

No part of this publication may be reproduced, stored in a retrieval system, or transmitted in any form or by any means - electronic, mechanical, photocopying, recording, or otherwise - without the permission of XLENT.

This document provides an outline of a presentation and is incomplete without the accompanying oral commentary and discussion.